

본 퓨즈의 가용체는 종래 제작방식을 탈피하여 혁신적인 제조방법으로 양산되며, 용단특성, 차단특성 및 기계적 강도 등 대폭 개량된 신제품입니다.

This fuse link is manufactured on the basis of mass production by an innovative manufacturing method that has made a breakthrough in the common sense of conventional manufacture of fuse element. The new product has been improved extensively as to prearcing time-current characteristic, breaking capacity and mechanical strength.

정격 & 외형치수 / Ratings & Dimension



| 형식 Type | 정격전압(V) Rated voltage | 정격전류(A) Rated current | 차단용량(kA) Breaking capacity | 외형치수(mm) Dimensions | | | | | | | | | | | Fig. |
|------------|--------------------------|--------------------------|-------------------------------|---------------------|------|------|------|------|------|------|------|-------|-------|------|------|
| | | | | A | B | C | D | E | F | G | H | J | K | L | |
| JR31 | 300 AC/DC | 10~60 | 100 | 56.0 | 42.0 | 2.0 | 17.0 | 12.0 | 18.2 | 9.4 | 6.5 | 27.0 | 75.0 | 28.7 | 1 |
| JR32 | | 60~120 | | 58.0 | 42.0 | 2.5 | 21.3 | 15.0 | 21.7 | 11.0 | 9.0 | 28.0 | 76.0 | 31.9 | |
| JR33 | | 100~160 | | 80.0 | 58.0 | 3.0 | 26.6 | 20.0 | 27.4 | 11.0 | 9.0 | 31.0 | 86.5 | 37.3 | |
| JR36 | | 150~300 | | 85.0 | 58.0 | 3.0 | 32.7 | 25.0 | 36.5 | 19.0 | 10.5 | 38.0 | 88.4 | 46.1 | |
| JR37 | | 350~500 | | 90.0 | 65.0 | 3.0 | 45.8 | 32.0 | 49.9 | 16.0 | 11.0 | 45.2 | 89.4 | 56.8 | |
| | | 600~900 | | 90.0 | 65.0 | 7.0 | 45.8 | 32.0 | 99.8 | 16.0 | 11.0 | 95.1 | 89.4 | 56.8 | |
| JR61 | 600 AC/DC | 10~ 80 | | 76.0 | 62.5 | 2.0 | 18.0 | 12.0 | 19.1 | 9.4 | 6.5 | 27.0 | 94.0 | 28.7 | 1 |
| JR62 | | 60~125 | | 90.0 | 70.0 | 2.5 | 21.3 | 15.0 | 21.7 | 11.0 | 9.0 | 28.0 | 100.0 | 31.9 | |
| JR63 | | 90~160 | | 90.0 | 70.0 | 3.0 | 26.6 | 20.0 | 27.4 | 11.0 | 9.0 | 31.0 | 100.0 | 37.3 | |
| JR66 | | 150~315 | | 106.0 | 81.0 | 3.0 | 32.7 | 25.0 | 36.5 | 19.0 | 10.5 | 38.0 | 108.3 | 46.1 | |
| JR67 | | 350~500 | | 109.0 | 84.0 | 3.5 | 45.8 | 32.0 | 49.9 | 16.0 | 11.0 | 45.2 | 109.3 | 56.8 | |
| | | 600~900 | | 109.0 | 84.0 | 7.0 | 45.8 | 32.0 | 99.8 | 16.0 | 11.0 | 95.1 | 109.3 | 56.8 | |
| JRS102 | 1000 DC | 20~160 | 120.0 | 98.0 | 3.0 | 27.2 | 20.0 | 28.0 | 11.0 | 9.0 | 28.0 | 106.0 | 36.0 | 1 | |
| JRS103 | | 200~315 | 142.0 | 114.0 | 3.0 | 37.5 | 25.0 | 42.0 | 16.0 | 11.0 | 74.0 | 109.0 | 45.0 | | |
| | | 400~630 | 142.0 | 114.0 | 6.0 | 38.0 | 25.0 | 84.0 | 16.0 | 11.0 | 74.0 | 109.0 | 45.0 | | 2 |

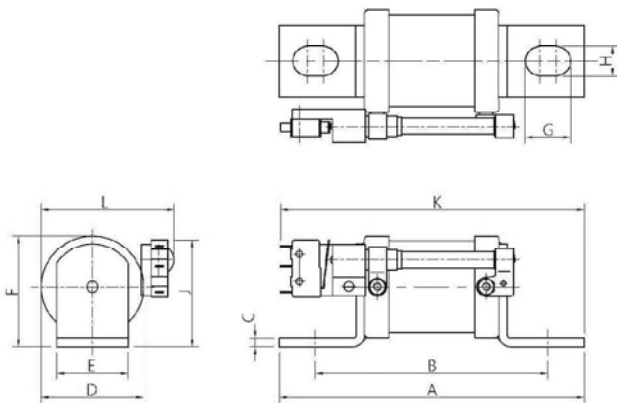


Figure 1

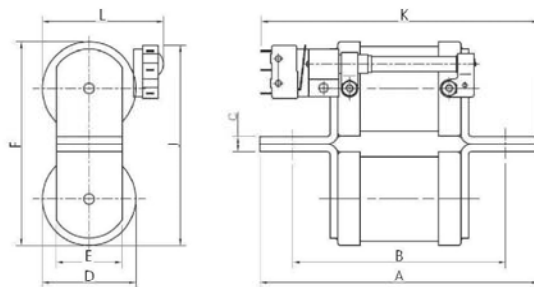


Figure 2

300 V (JR30 type)

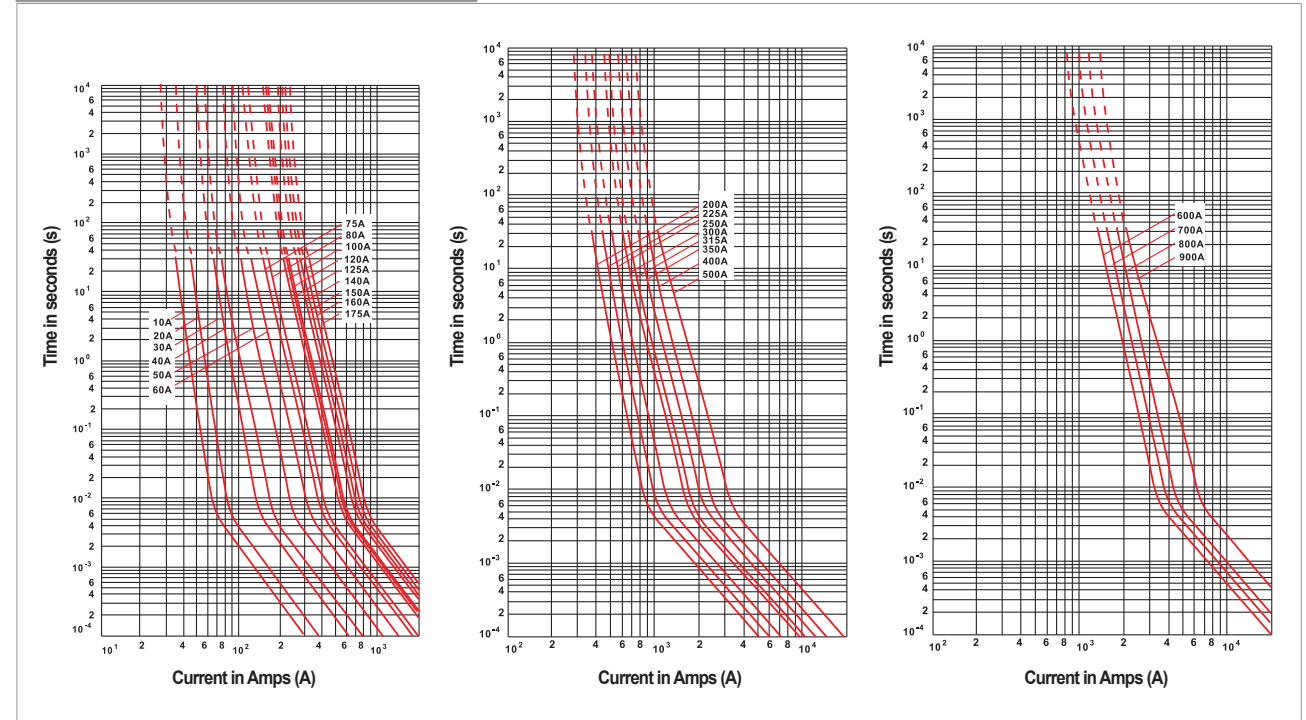


| 형식(Type) | | | 정격전류(A) Rated current | 용단(kA ² S) Pre-arcing | 동작(I ² T) Operating | 전력손실(W) Power loss | 비고 Remark |
|-----------------|--------------------------|--|--------------------------|-------------------------------------|-----------------------------------|-----------------------|-----------------|
| 일반형 Standard | 표시기 부착 With indicator | 표시기 & 스위치 부착형 With indicator & switch | | | | | |
| JR31-10 | JR31-10I | JR31-10IS | 10 | 0.001 | 0.007 | 2.5 | 단일형 (Single) |
| JR31-20 | JR31-20I | JR31-20IS | 20 | 0.01 | 0.045 | 3.5 | |
| JR31-30 | JR31-30I | JR31-30IS | 30 | 0.02 | 0.11 | 6.7 | |
| JR31-40 | JR31-40I | JR31-40IS | 40 | 0.04 | 0.27 | 7.5 | |
| JR31-50 | JR31-50I | JR31-50IS | 50 | 0.077 | 0.515 | 8 | |
| JR31-60 | JR31-60I | JR31-60IS | 60 | 0.115 | 0.77 | 9 | |
| JR31-75 | JR31-75I | JR31-75IS | 75 | 0.16 | 1.05 | 10 | |
| JR31-80 | JR31-80I | JR31-80IS | 80 | 0.185 | 1.25 | 11 | |
| JR31-100 | JR31-100I | JR31-100IS | 100 | 0.36 | 2.45 | 14 | |
| JR32-60 | JR32-60I | JR32-60IS | 60 | 0.115 | 0.77 | 9 | |
| JR32-70 | JR32-70I | JR32-70IS | 70 | 0.15 | 0.95 | 9.5 | |
| JR32-80 | JR32-80I | JR32-80IS | 80 | 0.185 | 1.25 | 11 | |
| JR32-100 | JR32-100I | JR32-100IS | 100 | 0.36 | 2.45 | 14 | |
| JR32-120 | JR32-120I | JR32-120IS | 120 | 0.5 | 3.7 | 16.5 | |
| JR33-100 | JR33-100I | JR33-100IS | 100 | 0.36 | 2.45 | 14 | |
| JR33-120 | JR33-120I | JR33-120IS | 120 | 0.5 | 3.7 | 16.5 | |
| JR33-125 | JR33-125I | JR33-125IS | 125 | 0.55 | 3.7 | 17 | |
| JR33-140 | JR33-140I | JR33-140IS | 140 | 0.85 | 5.2 | 18 | |
| JR33-150 | JR33-150I | JR33-150IS | 150 | 1 | 6.5 | 19 | |
| JR33-160 | JR33-160I | JR33-160IS | 160 | 1.1 | 7.5 | 20.5 | |
| JR36-150 | JR36-150I | JR36-150IS | 150 | 1 | 6.5 | 19 | |
| JR36-160 | JR36-160I | JR36-160IS | 160 | 1.1 | 7.5 | 20.5 | |
| JR36-175 | JR36-175I | JR36-175IS | 175 | 1.8 | 10 | 22 | |
| JR36-200 | JR36-200I | JR36-200IS | 200 | 2.2 | 15 | 24 | |
| JR36-225 | JR36-225I | JR36-225IS | 225 | 3.3 | 20 | 27 | |
| JR36-250 | JR36-250I | JR36-250IS | 250 | 4.2 | 28.5 | 29 | |
| JR36-300 | JR36-300I | JR36-300IS | 300 | 6 | 38.2 | 35 | |
| JR36-315 | JR36-315I | JR36-315IS | 315 | 7 | 46.5 | 38 | |
| JR37-350 | JR37-350I | JR37-350IS | 350 | 10 | 68.5 | 40 | |
| JR37-400 | JR37-400I | JR37-400IS | 400 | 15 | 165 | 45 | |
| JR37-500 | JR37-500I | JR37-500IS | 500 | 27 | 180 | 48 | |
| JR37-600 | JR37-600I | JR37-600IS | 600 | 41 | 275 | 60 | |
| JR37-700 | JR37-700I | JR37-700IS | 700 | 60.5 | 405 | 70 | |
| JR37-800 | JR37-800I | JR37-800IS | 800 | 86 | 575 | 80 | |
| JR37-900 | JR37-900I | JR37-900IS | 900 | 125 | 840 | 90 | |

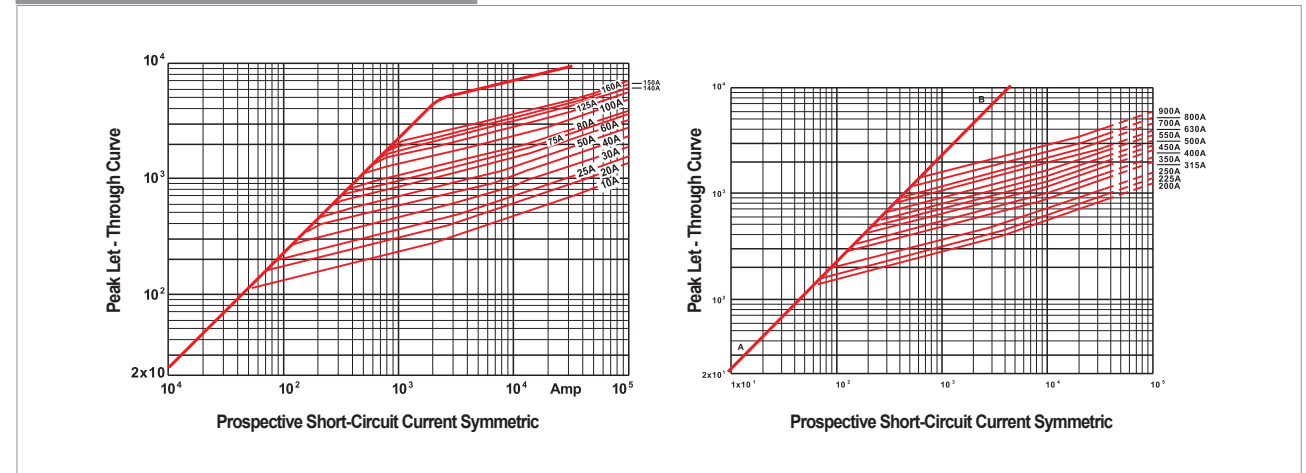
* 상기 제품 외 정격은 당사로 문의 부탁드립니다.
* Please contact us if you need different ratings not written in above.

특성 곡선 / Characteristics curve

Time-Current Curves - JR30 type



Peak Let - Through Curve - JR30 type



* 이 외의 특성 자료는 요청 시 제공 됩니다.
* Other characteristics data will be offered if requested.

600 V (JR60 type)

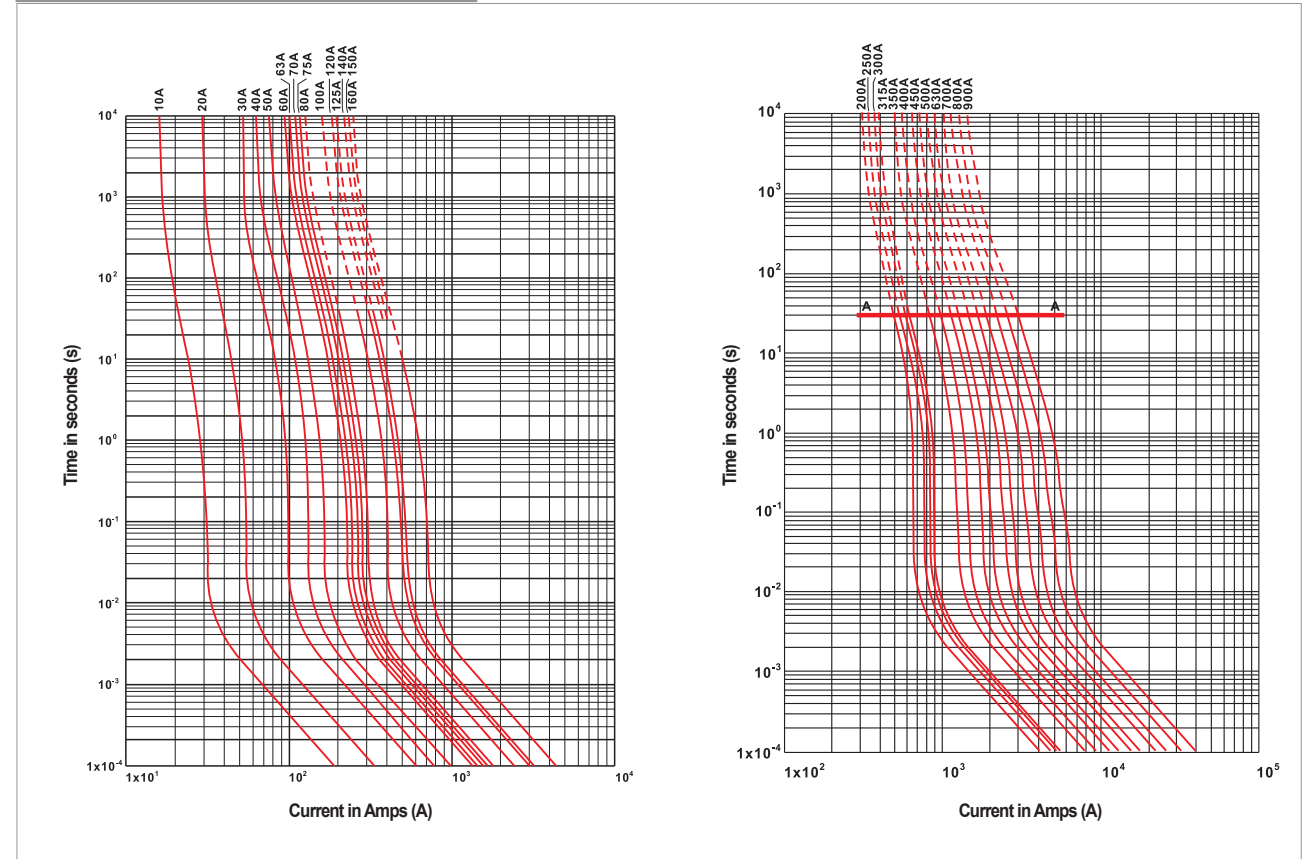


| 형식(Type) | | | 정격전류(A) Rated current | 용단(kA ² S) Pre-arcing | 동작(°T) Operating | 전력손실(W) Power loss | 비고 Remark |
|-----------------|--------------------------|--|--------------------------|-------------------------------------|---------------------|-----------------------|-----------------|
| 일반형 Standard | 표시기 부착 With indicator | 표시기 & 스위치 부착형 With indicator & switch | | | | | |
| JR61-10 | JR61-10I | JR61-10IS | 10 | 0.005 | 0.035 | 2.9 | 단일형 (Single) |
| JR61-20 | JR61-20I | JR61-20IS | 20 | 0.026 | 0.31 | 3.5 | |
| JR61-30 | JR61-30I | JR61-30IS | 30 | 0.074 | 0.77 | 6.0 | |
| JR61-40 | JR61-40I | JR61-40IS | 40 | 0.1 | 1.1 | 7.0 | |
| JR61-50 | JR61-50I | JR61-50IS | 50 | 0.167 | 1.6 | 9.0 | |
| JR61-60 | JR61-60I | JR61-60IS | 60 | 0.3 | 2.7 | 12.0 | |
| JR61-63 | JR61-63I | JR61-63IS | 63 | 0.3 | 2.7 | 12.0 | |
| JR61-70 | JR61-70I | JR61-70IS | 70 | 0.36 | 3.2 | 16.0 | |
| JR61-75 | JR61-75I | JR61-75IS | 75 | 0.38 | 3.5 | 16.5 | |
| JR61-80 | JR61-80I | JR61-80IS | 80 | 0.4 | 3.8 | 17.0 | |
| JR61-100 | JR61-100I | JR61-100IS | 100 | 0.67 | 7.4 | 22.0 | |
| JR62-60 | JR62-60I | JR62-60IS | 60 | 0.3 | 2.7 | 12.0 | |
| JR62-70 | JR62-70I | JR62-70IS | 70 | 0.36 | 3.2 | 16.0 | |
| JR62-80 | JR62-80I | JR62-80IS | 80 | 0.4 | 3.8 | 17.0 | |
| JR62-90 | JR62-90I | JR62-90IS | 90 | 0.59 | 6.8 | 19.0 | |
| JR62-100 | JR62-100I | JR62-100IS | 100 | 0.67 | 7.4 | 22.0 | |
| JR62-120 | JR62-120I | JR62-120IS | 120 | 1.2 | 10.6 | 25.0 | |
| JR62-125 | JR62-125I | JR62-125IS | 125 | 1.2 | 10.6 | 25.0 | |
| JR63-100 | JR63-100I | JR63-100IS | 100 | 0.67 | 7.4 | 22.0 | |
| JR63-110 | JR63-110I | JR63-110IS | 110 | 0.98 | 9.8 | 23.0 | |
| JR63-120 | JR63-120I | JR63-120IS | 120 | 1.2 | 10.6 | 25.0 | |
| JR63-140 | JR63-140I | JR63-140IS | 140 | 1.6 | 14 | 28.0 | |
| JR63-150 | JR63-150I | JR63-150IS | 150 | 2 | 17 | 30.0 | |
| JR63-160 | JR63-160I | JR63-160IS | 160 | 2.1 | 18 | 35.0 | |
| JR63-180 | JR63-180I | JR63-180IS | 180 | 2.8 | 25 | 39.0 | |
| JR66-150 | JR66-150I | JR66-150IS | 150 | 2 | 17 | 30.0 | |
| JR66-160 | JR66-160I | JR66-160IS | 160 | 2.1 | 18 | 35.0 | |
| JR66-200 | JR66-200I | JR66-200IS | 200 | 3.3 | 29 | 40.0 | |
| JR66-250 | JR66-250I | JR66-250IS | 250 | 6 | 49.5 | 50.0 | |
| JR66-300 | JR66-300I | JR66-300IS | 300 | 11.2 | 58 | 55.0 | |
| JR66-315 | JR66-315I | JR66-315IS | 315 | 13.8 | 68 | 60.0 | |
| JR66-350 | JR66-350I | JR66-350IS | 350 | 21.5 | 120 | 70.0 | |
| JR67-350 | JR67-350I | JR67-350IS | 350 | 21.5 | 120 | 70.0 | |
| JR67-400 | JR67-400I | JR67-400IS | 400 | 31 | 210 | 85.0 | |
| JR67-450 | JR67-450I | JR67-450IS | 450 | 44.5 | 298 | 88.0 | |
| JR67-500 | JR67-500I | JR67-500IS | 500 | 63 | 420 | 95.0 | |
| JR67-600 | JR67-600I | JR67-600IS | 600 | 82.5 | 490 | 105 | |
| JR67-700 | JR67-700I | JR67-700IS | 700 | 115 | 700 | 115 | |
| JR67-800 | JR67-800I | JR67-800IS | 800 | 170 | 1050 | 125 | |
| JR67-900 | JR67-900I | JR67-900IS | 900 | 250 | 1500 | 130 | |

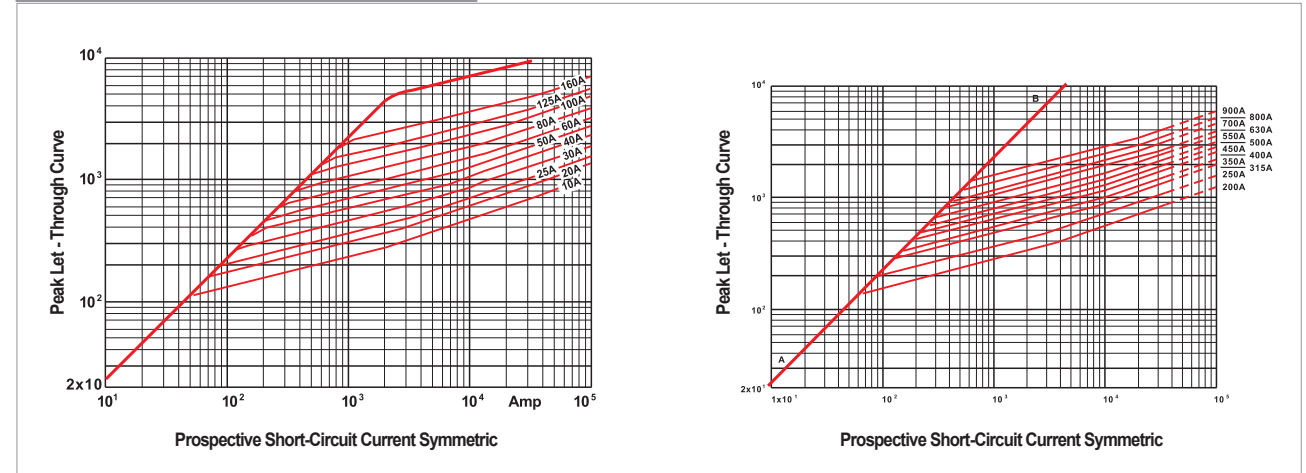
※ 상기 제품 외 정격은 당사로 문의 부탁드립니다.
 ※ Please contact us if you need different ratings not written in above.

특성 곡선 / Characteristics curve

Time-Current Curves - JR60 type



Peak Let - Through Curve - JR60 type



※ 이 외의 특성 자료는 요청 시 제공됩니다.
 ※ Other characteristics data will be offered if requested.

1000 V (JRS100 type)



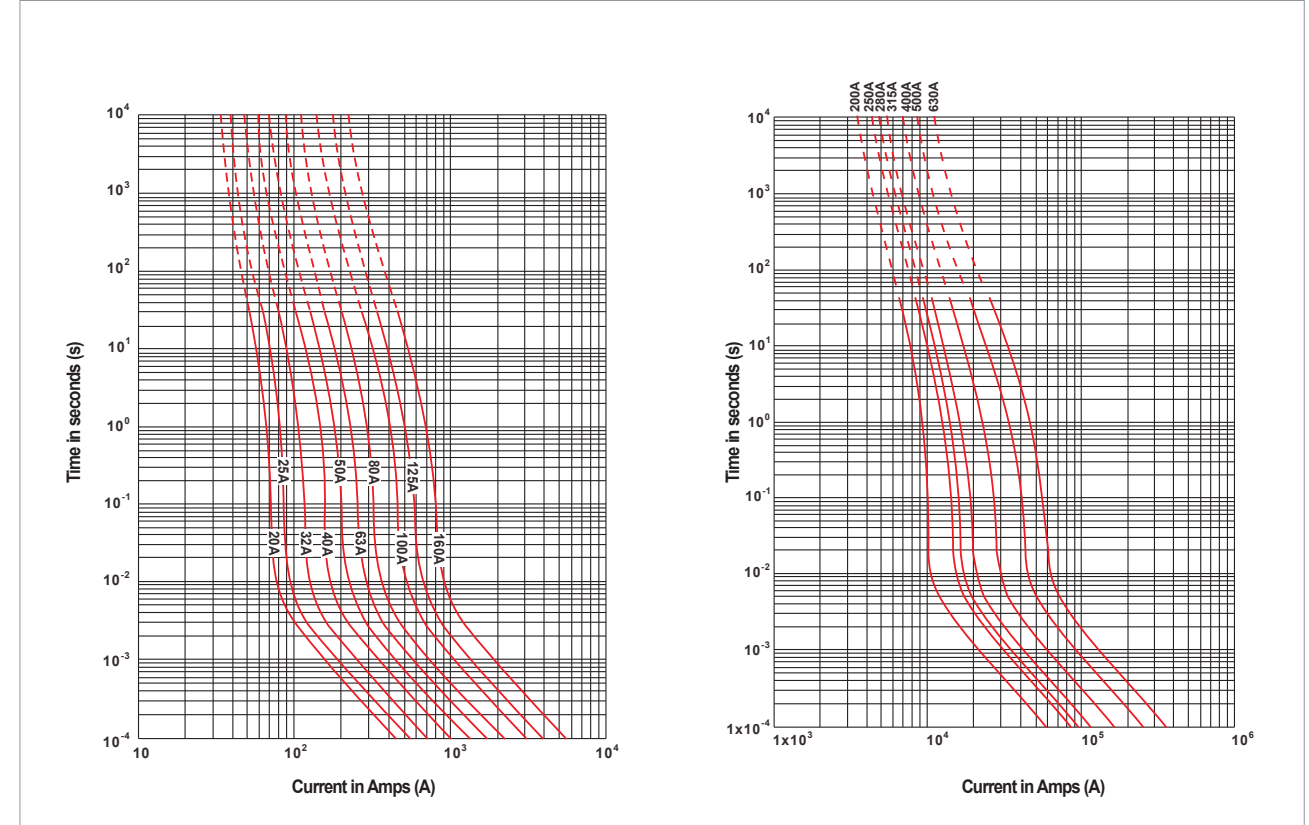
| 형식(Type) | | | 정격전류(A) Rated current | 용단(kA ² S) Pre-arcing | 동작(°T) Operating | 전력손실(W) Power loss | 비고 Remark |
|-----------------|--------------------------|--|--------------------------|-------------------------------------|---------------------|-----------------------|-----------------|
| 일반형 Standard | 표시기 부착 With indicator | 표시기 & 스위치 부착형 With indicator & switch | | | | | |
| JRS102-20 | JRS102-20I | JRS102-20IS | 20 | 0.072 | 0.208 | 4 | 단일형 (Single) |
| JRS102-25 | JRS102-25I | JRS102-25IS | 25 | 0.113 | 0.326 | 5 | |
| JRS102-32 | JRS102-32I | JRS102-32IS | 32 | 0.451 | 1.302 | 6.3 | |
| JRS102-40 | JRS102-40I | JRS102-40IS | 40 | 0.65 | 1.875 | 8 | |
| JRS102-50 | JRS102-50I | JRS102-50IS | 50 | 1.333 | 3.947 | 10.8 | |
| JRS102-63 | JRS102-63I | JRS102-63IS | 63 | 1.805 | 5.208 | 12.6 | |
| JRS102-80 | JRS102-80I | JRS102-80IS | 80 | 2.6 | 7.5 | 18.4 | |
| JRS102-100 | JRS102-100I | JRS102-100IS | 100 | 4.062 | 11.7 | 23 | |
| JRS102-125 | JRS102-125I | JRS102-125IS | 125 | 5.85 | 16.875 | 36 | |
| JRS102-160 | JRS102-160I | JRS102-160IS | 160 | 10.4 | 30 | 55 | |
| JRS103-200 | JRS103-200I | JRS103-200IS | 200 | 14.6 | 38 | 68 | |
| JRS103-250 | JRS103-250I | JRS103-250IS | 250 | 21.046 | 61.3 | 100 | |
| JRS103-280 | JRS103-280I | JRS103-280IS | 280 | 34 | 99 | 116 | |
| JRS103-315 | JRS103-315I | JRS103-315IS | 315 | 37.4 | 109 | 123 | |
| JRS103-400 | JRS103-400I | JRS103-400IS | 400 | 58.4 | 152 | 154 | 더블형 (Double) |
| JRS103-500 | JRS103-500I | JRS103-500IS | 500 | 4.2 | 240 | 185 | |
| JRS103-630 | JRS103-630I | JRS103-630IS | 630 | 7.4 | 410 | 252 | |

※ 상기 제품 외 정격은 당사로 문의 부탁드립니다.
 ※ Please contact us if you need different ratings not written in above.

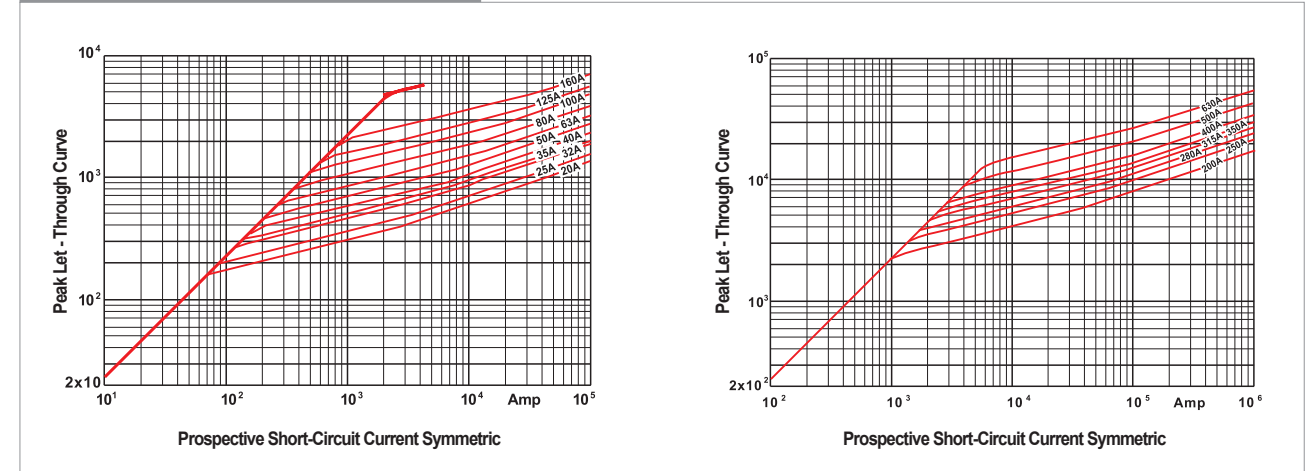


특성 곡선 / Characteristics curve

Time-Current Curves - JRS100type



Peak Let - Through Curve - JR100 type



※ 이 외의 특성 자료는 요청 시 제공 됩니다.
 ※ Other characteristics data will be offered if requested.